



MatthewPierce
www.matthewpierce.co.uk

5 & 6 High Street,
Claygate,
Surrey,
KT10 0JG

01372 463100

claygate@matthewpierce.co.uk

CORNERWAYS, CORNWALL AVENUE, CLAYGATE, SURREY KT10 0HX

A fascinating, detached, bijou two-bedroom cottage, with considerable scope to extend if so desired (subject to planning). Offering two reception rooms, refurbished galley kitchen and utility/cloakroom on the ground floor. With two bedrooms and a modern bathroom upstairs. Set moments from Claygate Common and just 0.65 of a mile from the station and shops. Benefiting from secluded gardens and parking for two cars.

NO ONWARD CHAIN



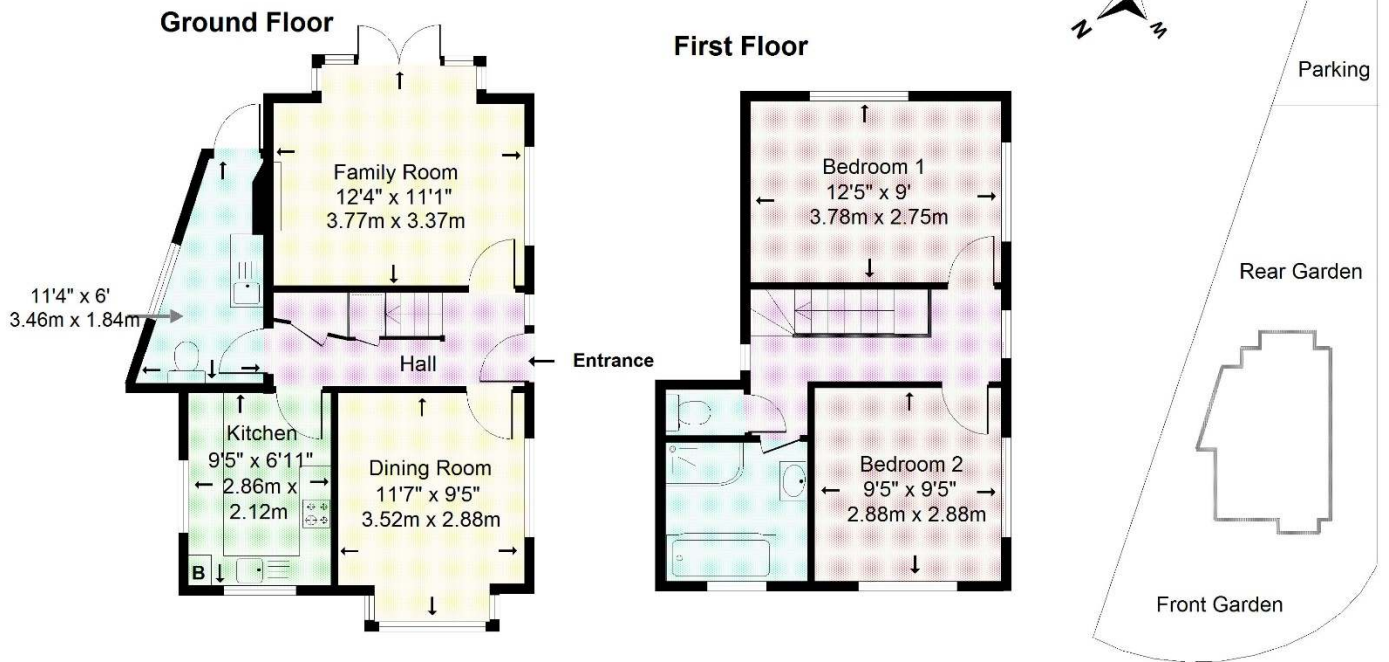
PRICE GUIDE £799,950 FREEHOLD Council Tax: Band E EPC: Band D

Matthew Pierce give notice that these particulars whilst believed to be accurate, are set out as a general guidance only. Intending purchasers or tenants should not rely on them as statements or representations of fact, but must satisfy themselves by inspection or otherwise as to their accuracy. As such, it does not constitute or form part of a contract. No person in the employment of Matthew Pierce has the authority to make or give representation or warranty in relation to the property.



Cornerways, Cornwall Avenue, Claygate, Surrey. KT10 0HX

Approximate Gross Internal Floor Area: 72m sq (775sq ft)



This plan is for illustrative purposes only and is not drawn to scale unless stated. Whilst every care has been taken to ensure the accuracy of this plan, dimensions and compass bearings should be checked before making any decisions reliant upon them. Dimensions shown are to the nearest 3" and are to where indicated by arrow heads. Appliances and utilities eg. baths, cookers etc are visuals only, style and shape may differ.

© Drawing Rooms 2023 - Reproduced for Matthew Pierce

THIS PLAN HAS BEEN COMMISSIONED BY MATTHEW PIERCE AND
MUST NOT BE REPRODUCED WITHOUT PRIOR PERMISSION

Not to scale

